



Ready...Steady...Grow...



At the Sustainability Centre we are passionate about helping people to lead happier, healthier lives and fulfil their potential, using education in sustainable and environmentally friendly living as the vehicle. We are working to strengthen our community by being an authentic example of transformation and by offering innovative programmes, practical support and positive solutions.

We face environmental challenges which are being exacerbated by our human lifestyles. We need to change the negative impact of the way we live, at individual, local, regional, national and international levels. The Sustainability Centre develops and shares positive ways to achieve this.

We work with people of all ages, living in our local community and beyond. We have a tranquil 55-acre woodland site in the heart of Hampshire's South Downs National Park. Our immersion learning activities range from school group visits and individually tailored alternative education for children who are at risk of exclusion from school, to adult volunteering as an enabler for health and well-being. We are open to the public, offering popular, sustainability-themed courses, activities and events, and a natural burial site.

We have already raised over £675,000 and need a further £250,000 to start works in early 2020

Why we need to Grow...

We experience a huge demand for our services in our local community that we currently do not have the resources to meet. Health and wellbeing are very poorly served in this area with small initiatives locally are oversubscribed. Advisory and mental health services have difficulty finding formal placements which would benefit their clients.

The need for support services for vulnerable adults and young people, people with mental health challenges and those suffering from isolation and deprivation is huge, particularly in our local deprived area of East Meon and in nearby Portsmouth, which has some of the most deprived wards in the country. We are currently having to turn away some of those who come to us for help as we simply cannot accommodate them or give them the support they need.

We want to meet these needs and support, enable and inspire many more people by:

- Further developing early intervention services for young adults
- Extending and developing our learning programmes
- Creating inspiring spaces as exemplars of sustainable building design using local and natural materials
- Maximising, capturing and sharing learning opportunities within the creation of these spaces for re-skilling the workforce and training early working age adults
- Offering opportunities for volunteers that directly contribute to the overall achievements of the project
- Developing new health and wellbeing programmes

Real Life Stories: Our people centred programmes genuinely transform people's lives

14-year-old J spent his days at his special school quite literally ether throwing furniture or hiding under the desk. After 6 days of Forest School with Sean, one of our staff, he was a different boy. Following this initial course we went on to design a 6-week personalised programme for him here on site, working and learning with Sean. He showed himself to be a gifted blacksmith and is now training to be a blacksmith.

One of our supporters was so inspired by J's transformation that he helped us set up the Young Natural Ambassador Award, an annual scheme to give other local young people a personalised opportunity like J's.

B first visited the Centre to attend a funeral and found community, peace and acceptance. He is now one of our most longstanding volunteers and enjoys sharing the skills he has learnt and welcoming new volunteers.

C is a regular client at our site as part of a partnership rural skills project where adults with learning difficulties grow plants and learn rural crafts, selling their produce. She has grown in confidence and lives independently as a result.

Earthworks Trust

The Sustainability Centre, Droxford Road, East Meon, Petersfield, Hampshire, GU32 1HR
 01730 823166 www.sustainability-centre.org christine@sustainability-centre.org
 Company No: 3011755 VAT No: 673751707 Charity No: 1079866

The Earthworks Trust is a charity operating as The Sustainability Centre. Established in 1995.



Our Vision - Wetherdown Lodge Final Transformation

We want to bring together people in need from across our community, creating and strengthening bonds between individuals and groups and helping them feel part of something exciting and meaningful; the refitting of a former MoD building. The refit will be used to teach, inspire, empower and provide hands-on volunteering, learning and support services as outlined below.

The completed building will go on to provide overnight accommodation for the residential courses and programmes we offer.

We will

1. Work with Highbury College in Portsmouth to develop and deliver a 'Learning and Growing through Building' programme, giving students from a disadvantaged area the opportunity to work on a real, meaningful sustainable building project. This will be an experience they can't currently access on their carpentry and plastering courses. In turn this will improve the life opportunities of these young people.

The programme will include plenty of hands-on work making and installing things such as doors, skirting boards, roof trusses and cladding, as well as teaching days at the college itself focusing on sustainable and natural building techniques.



2. Offer volunteering opportunities to vulnerable and/or deprived local people as a means of supporting them through their challenges with mental and/or physical health and wellbeing, isolation and other issues that affect their quality of life and ability to fulfil their potential. They will be involved in outdoor work such as landscaping at the front of the building, creating a herb garden and building a pergola.



3. Provide learning opportunities for adults alongside the building programme. These will be one-off talks and workshops on the building site for building professionals, private individuals, architects, local authority planners and others with an interest and/or influence in eco-refit, which is becoming a very hot topic in the light of the climate emergency.

4. Deliver outreach work (talks and events) in the local community (particularly in deprived East Meon and Portsmouth), sharing with local people what the project is doing and inspiring them to think about how they can adopt similar ways of saving energy and water, adapting to climate change, etc, in their own homes and places of work.



5. Share the learning from the project more widely than the local community, and make it available to those who are isolated or unable to come to the site, by providing videos and 'how-tos' online through Youtube.

6. Increase our accessibility to disabled visitors by providing facilities for wheelchair users and carers and 'Changing Places' facilities.

Earthworks Trust

The Sustainability Centre, Droxford Road, East Meon, Petersfield, Hampshire, GU32 1HR

01730 823166 www.sustainability-centre.org christine@sustainability-centre.org

Company No: 3011755 VAT No: 673751707 Charity No: 1079866

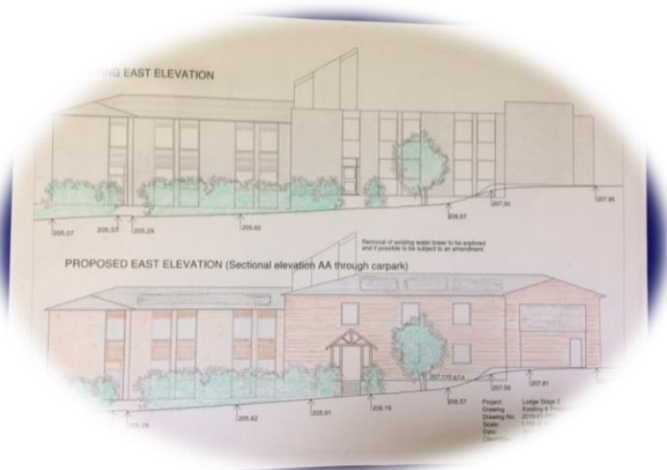
The Earthworks Trust is a charity operating as The Sustainability Centre. Established in 1995.



Together we will transform this....



into this



Who will benefit, and how

Outputs	Beneficiaries	How they will benefit	Estimated number
Eco-refitted accommodation building with 60 beds, including a fully accessible suite	Under 18s, groups and individual learners and visitors	Dedicated overnight accommodation for a broader range of visitors	3,212
Learning and Growing Through Building Programme	Students from Highbury College, Portsmouth.	Gaining skills and experience they can't currently access thereby improving their life chances/opportunities	60
Learning programme for adults alongside the build – talks, workshops and hands-on learning	Building professionals, private individuals, architects, community planners etc.	Through a series of talks and workshops gain new knowledge and understanding of sustainable building techniques and tools	100
Volunteer programme during the build	Vulnerable/deprived local people, and other local volunteers	Improved health and wellbeing through social bonding and meaningful outdoor activity.	100
Local outreach programme	Residents of the local deprived community	Empowered and enabled to be early adopters of learning outcomes	3,000
A series of You Tube videos	Distance learners	Shared learning	1,000
Total beneficiaries	-	-	7,472

Outline Budget

Item	Cost (£)
Eco-refit of Wetherdown Lodge	
Design and contract preparation and supervision – Architect Fees	9,400
Design and contract project management	7,800
Build costs (estimate based on outline quotes – full breakdown can be supplied)	860,000
Sub Total:	877,200
10% Contingency	87,720
Sub Total	964,920.00
Learning and Growing through Building Programme	
Salary - Site Liaison Officer (22.5hpw Site Liaison Officer to work alongside main contractor to identify and integrate learning opportunities.)	16,000
Salary - Client Liaison (22.5hpw Liaison Officer to work with Highbury College and deliver the community learning programme.)	16,000
Tools & Equipment for participants	8,000
Online Learning Package	10,000
Administration	7,000
Management fee	10,000
Office and overheads	6,800
Sub Total:	73,800
Total cost of Stage 1:	1,038,720
Funds already raised	650,000
Shortfall currently being sought	388,720

Earthworks Trust

The Sustainability Centre, Droxford Road, East Meon, Petersfield, Hampshire, GU32 1HR

01730 823166 www.sustainability-centre.org christine@sustainability-centre.org

Company No: 3011755 VAT No: 673751707 Charity No: 1079866

The Earthworks Trust is a charity operating as The Sustainability Centre. Established in 1995.



We have experience in managing a substantial turnover and annual budget of £500,000 (2017 budget turnover = £503,549). Our financial systems are robust and, as a registered charity, are subject to annual independent scrutiny. Detailed monthly accounts are prepared and monitored with oversight of the Board of Trustees as part of our financial management systems. Financial safeguards are in place and spot checks undertaken regularly.

This project will enable us to reach more people and meet the real needs we see around us, as well as inspiring many more people to live more sustainably. Please consider giving a donation or grant to help us make it happen.

Together we can make it happen.....



We are ready – our leadership in this field is recognised; we have planning permission; programmes have been tested; the team has the expertise and appetite for change; we have strong leadership and vision.

We are steady – we are financially stable; our management model works well; we have a strong belief and ethos at our core. Our experience and 23-year track record provides a solid foundation.

We have a vision for growth that is innovative and unique. We are needed more than ever in response to public demand for our services and the community's need for solutions to the challenges of our time.

Earthworks Trust

The Sustainability Centre, Droxford Road, East Meon, Petersfield, Hampshire, GU32 1HR

01730 823166 www.sustainability-centre.org christine@sustainability-centre.org

Company No: 3011755 VAT No: 673751707 Charity No: 1079866

The Earthworks Trust is a charity operating as The Sustainability Centre. Established in 1995.

